

# ▶ ANNUAL REPORT 2022





11th MALTA CONFERENCE

# ENRICHING TEACHERS' PROFESSIONAL LIVES

14-15 OCTOBER 2022



Learn about language learning

elt council

GOVERNMENT OF MALTA

THANK YOU TO OUR SPONSORS





# TABLE OF CONTENTS

<b>Message from the CEO</b>	<b>05</b>
<b>List of Acronyms</b>	<b>06</b>
<b>Board Composition</b>	<b>07</b>
<b>Overview</b>	<b>09</b>
The English Language Teaching (ELT) Council Is Established	09
<b>Quality Assurance</b>	<b>11</b>
Monitoring Exercise	11
List Of Schools/Annexes Visited In 2022	11
Spot-Checks	12
List Of Schools/Annexes Visited In 2022	12
<b>Policies, Procedures and Forms</b>	<b>15</b>
Free Continuing Professional Development (CPD) Sessions Organized By The CPD In 2022	15
CPD In 2022	16
Teacher Education And Learning To Teach (TELT)	16
Approved TEFL Award Courses in 2022	18
ELT Permits	18
Spoken English Proficiency Test for Teachers (SEPTT)	19
Accommodation	20
ELT Council Meetings Dates	20
<b>Information Management</b>	<b>22</b>
Meeting With ELT Schools	22
Licensed ELT Schools	22
Licensed School Annexes	24
Distance Learning Providers (DLP)	25
<b>Administration</b>	<b>26</b>
Communication	26
Premises	26
Procurement And Tenders	26
Human Resources Initiatives	26
Staff Training And Events	26
<b>Sectoral Initiatives</b>	<b>29</b>
Master Of Arts In Teaching English To Speakers Of Other Languages (MATESOL) Sponsorship	29
TEFL Award Course Sponsorship	29
Awards Giving Ceremonies	29
Teachers' Cards	30
Central Visa Unit (CVU)	30
Protection Of Minors Applications (POMA)	30
Other	30
<b>Financial Statement</b>	<b>31</b>



# MESSAGE FROM THE CEO



2022 has been a positive year which enabled the industry to get back on its feet after two challenging pandemic years, confirming its resilience in the face of a global crisis which practically brought our sector to a standstill. Thanks to the efforts of all stakeholders, we are back on track in reclaiming Malta's deserved place as a global leader in a highly competitive sector.

Some highlights of 2022 include our commitment to ensure the sector's reputation as a quality ELT destination and our continuous focus on fostering excellence in a high-quality language learning experience.

Looking positively into 2023, we remain committed to our vision of excellence achieved by nurturing the ELT profession and industry, and by focusing on quality assurance, effective support structures and active collaboration with all industry stakeholders.

In the next year we are committed to continue focusing on teachers' professional development, promoting Malta as a quality destination, and fostering a competent community of licensed operations committed to ensuring a quality language learning experience.

As the scenario for 2023 is looking positive, we must continue to strive to compete on an international level while ensuring that we remain prepared for any challenges that come our way.

Not only do language schools contribute directly to the economy thanks to the industry's added value and multiplier effect, but students also take with them fond memories of their stay in Malta which they share with friends and relatives in all corners of the world. We look forward to continuing our future endeavors driven by the same enthusiasm and dynamism which have characterised this sector for the past decades.

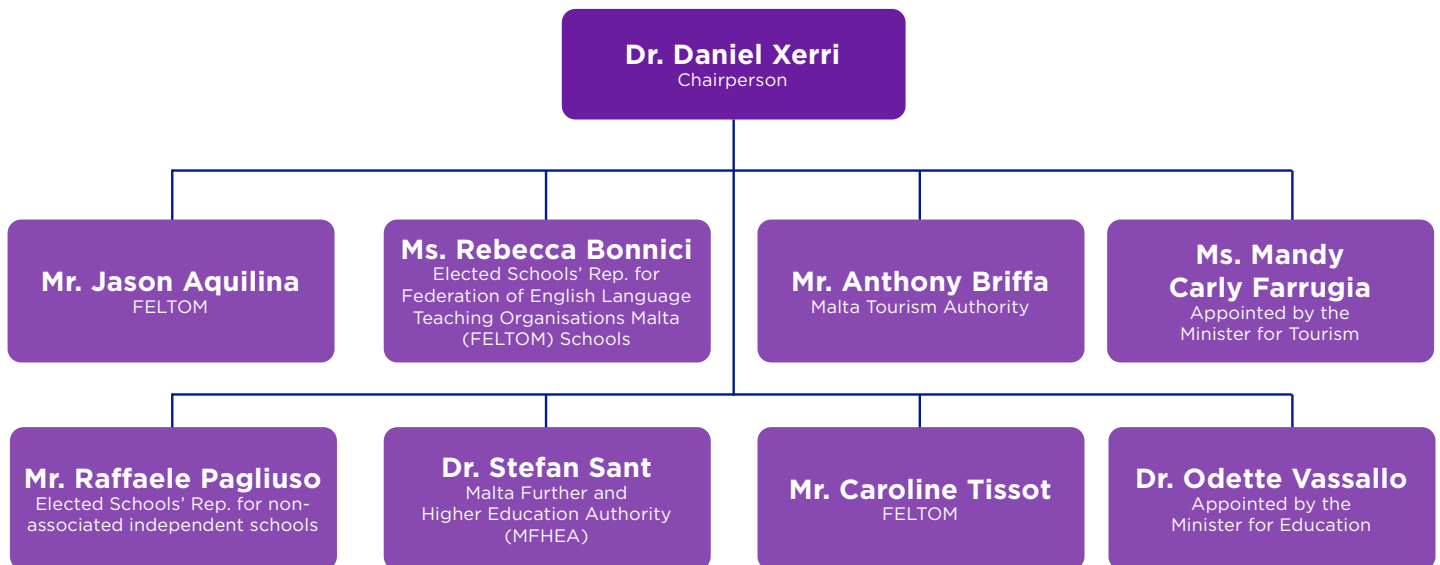
**Ms. Sue Falzon**

Chief Executive Officer  
ELT Council

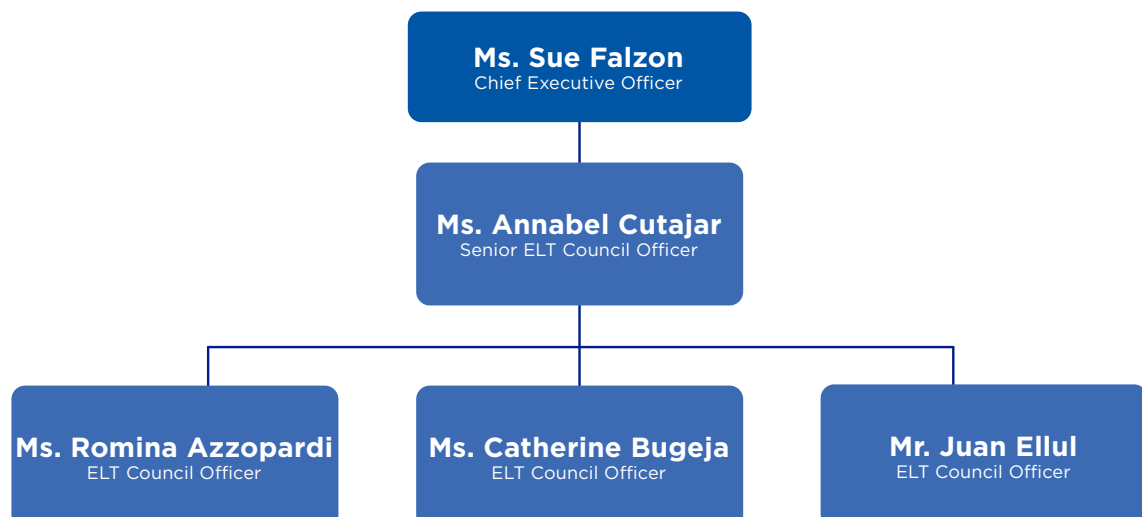
# LIST OF ACRONYMS

CEO	Chief Executive Officer
CPD	Continuing Professional Development
CVU	Central Visa Unit
DLP	Distance Learning Providers
ELT	English Language Teaching
EU	European Union
FELTOM	Federation of English Language Teaching Organisations Malta
ICEF	International Consultants for Education and Fairs
KSU	Kunsill Studenti Universitarji
MATESOL	Master of Arts in Teaching English to Speakers of Other Languages
MFHEA	Malta Further and Higher Education Authority
NSO	National Statistics Office
POMA	Protection of Minors Applications
SEPTT	Spoken English Proficiency Test for Teachers
TCN	Third Country Nationals
TEFL	Teaching English as a Foreign Language
TELT	Teacher Education and Learning to Teach

# BOARD COMPOSITION



## STAFF MEMBERS





The mission of the  
ELT Council for ELT  
Schools is to foster  
the ELT Profession  
and Industry in all its  
various aspects.

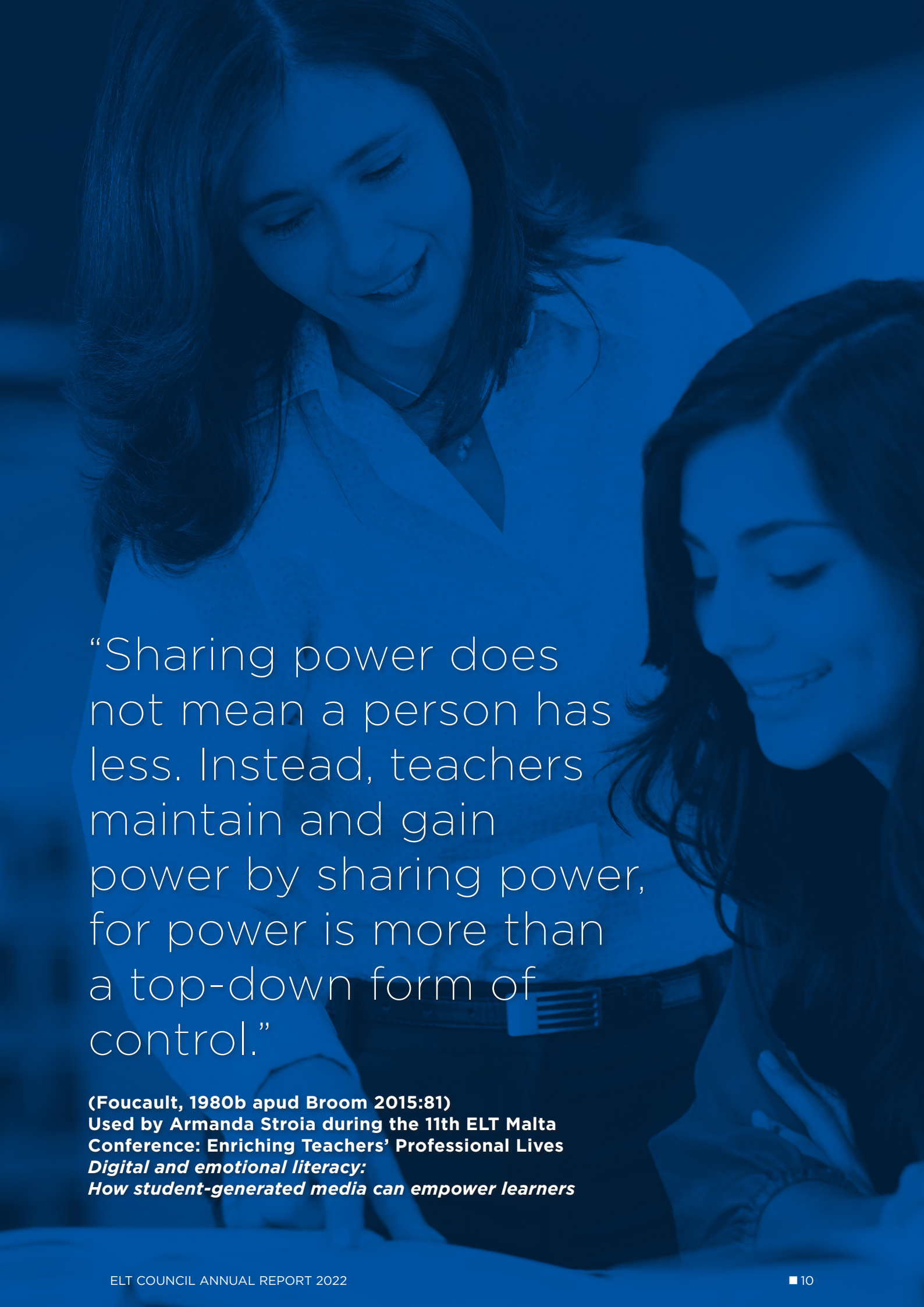
**ELT COUNCIL  
MISSION STATEMENT**



# OVERVIEW

## THE ENGLISH LANGUAGE TEACHING (ELT) COUNCIL IS ESTABLISHED

- To stimulate, promote and safeguard the ELT profession and encourage the proficient use of the English Language on a national basis;
- To upgrade standards in ELT teachers' qualifications and raise ELT to the level of a regulated profession;
- To maintain and operate quality assurance systems in all aspects of English Language stays that provide for periodic rigorous audits to assure compliance with established quality standards;
- To foster Malta's reputation as an international learning centre of repute in all aspects of ELT stays;
- To create a framework of ELT qualifications based on learning outcomes and referenced to the Malta Qualifications Framework in line with International and European Qualifications Networks;
- To establish and maintain statutory links between ELT and the tourism industry and between ELT and other public and private institutions to constitute an improved platform for further sustainable growth and to strengthen the all ready existing rapport;
- To ensure professional management, administrative and physical resources for the growing remit of the ELT Council by allocating to it suitably qualified and skilled human resources and commensurate premises that continually upgrade the profile of the Council in line with its increasing importance on the national economic level.



“Sharing power does not mean a person has less. Instead, teachers maintain and gain power by sharing power, for power is more than a top-down form of control.”

**(Foucault, 1980b apud Broom 2015:81)**  
**Used by Armanda Stroia during the 11th ELT Malta Conference: Enriching Teachers’ Professional Lives**  
***Digital and emotional literacy:  
How student-generated media can empower learners***

# QUALITY ASSURANCE

The ELT Council has established comprehensive Quality Assurance processes in pursuance of two of its key functions to:

- i) maintain and operate quality assurance systems in all aspects of English Language stays that provide for periodic rigorous audits to assure compliance with established quality standards;
- ii) foster Malta's reputation as an international learning centre of repute in all aspects of ELT stays.

## MONITORING EXERCISE

A Schools' Visit policy is in place and all Schools are visited at least once every two years. Each visit covers both regulatory compliance matters and academic aspects. Visits this year were held between May and September 2022. An announced visit is held in all licensed ELT operations once every two years, therefore schools visited in 2021 were not visited in 2022. Schools were contacted by a Monitoring Officer to schedule a visit. The scope of the visits is to confirm legal compliance of operator, provide an opportunity for improvement as well to enhance the quality of the ELT Industry in Malta.

## LIST OF SCHOOLS/ANNEXES VISITED IN 2022

	<b>Name of School/Annexe</b>	<b>Address</b>
1.	<b>A CLASS ACADEMY OF ENGLISH</b>	St. Catherine's High School, 11, Suffolk Road, Pembroke, PBK 1901
2.	<b>ALPHA SCHOOL OF ENGLISH</b>	Arznell Street, St. Paul's Bay, SPB 3232
3.	<b>AM LANGUAGE (Annexe)</b>	Convent of the Sacred Heart, Sacred Heart Avenue, St Julian's
4.	<b>BELS GOZO</b>	Triq ta' Doti, Kercem, KCM 1721 Gozo
5.	<b>BSC YOUNG LEARNERS MALTA LTD</b>	Campus Hub Block O, University of Malta, Tal Qroqq, L-Imsida, MSD 2080
6.	<b>EASY SCHOOL OF LANGUAGES</b>	21, St. Ursula Street, Valletta, VLT 1230
7.	<b>EEC-ITIS MALTA TOURISM &amp; LANGUAGES INSTITUTE</b>	9, EEC - ITIS Building, Triq San Pietru, San Gwann, SGN 2310

8.	<b>ENGLISH LANGUAGE ACADEMY</b>	151, Edgar Bernard Street, Gzira, GZR 1707
9.	<b>ENGLISH PATH MALTA</b>	West Block, Level 5/6, Marguerite Mangion Street, St. Julian's
10.	<b>EUROPEAN SCHOOL OF ENGLISH (ESE)</b>	ESE Building, Paceville Avenue, St. Julian's, STJ 3103
11.	<b>GATEWAY SCHOOL OF ENGLISH (GSE)</b>	1, Bosfru Street, San Gwann (St.Julian's)
12.	<b>INSTITUTE OF ENGLISH LANGUAGE STUDIES (IELS)</b>	Mattew Pulis Street, Sliema, SLM 3052
13.	<b>INTERNATIONAL HOUSE MALTA - (Annexe)</b>	International House, Young Learner Summer Programme, Paradise Bay Resort Hotel, Cirkewwa
14.	<b>LONDON SCHOOL OF COMMERCE (LSC)</b>	3rd Floor, Europa Centre, St.Anne Street, Floriana, FRN 9020
15.	<b>MALTA UNIVERSITY LANGUAGE SCHOOL</b>	Campus Hub, Block O, Level 6, University of Malta, Tal-Qroqq, Msida
16.	<b>NSTS ENGLISH LANGUAGE INSTITUTE</b>	12, Taliana Lane, Gzira, GZR 1723
17.	<b>SEAL MALTA</b>	58, Tower Tinghi Street, Xewkija, Gozo

## SPOT-CHECKS

Unannounced spot checks have been conducted by the ELT Council officers with the aim of ensuring that all legal requirements are being met, and to re-confirm quality standards and high levels of performance in the local ELT industry. All reports are treated as confidential, and all inspectors enter into a signed agreement with the Council to safeguard confidentiality before, during and after the inspection.

## LIST OF SCHOOLS/ANNEXES VISITED IN 2022

	<b>Name of School/Annexe</b>	<b>Address</b>
1.	<b>BELS MALTA (Main School)</b>	550 West, St. Paul's Street, St. Paul's Bay
2.	<b>CAVENDISH SCHOOL OF ENGLISH (Main School)</b>	124, Melita Street, Valletta, VLT1123
3.	<b>EEC-ITIS MALTA TOURISM &amp; LANGUAGES INSTITUTE (Main School)</b>	9, EEC - ITIS Building, Triq San Pietru, San Gwann, SGN 2310
4.	<b>ENGLISH DOMAIN (Main School)</b>	Domain Building, 102/104, Constitution Street, Mosta, MST 9055



5.	<b>GV MALTA ENGLISH CENTRE (Main School)</b>	St. George's Street, St. Paul's Bay, SPB 3476
6.	<b>LINK SCHOOL OF ENGLISH (Main School)</b>	88/90, Triq it-Tiben, Swieqi, SWQ 3034
7.	<b>LONDON SCHOOL OF COMMERCE (Main School)</b>	3rd Floor, Europa Centre, St. Anne Street, Floriana, FRN 9020
8.	<b>UNILANG INTERATIONAL SCHOOL OF LANGUAGES (Main School)</b>	Workers' Memorial Building, South Street, Valletta



“Culture is a fluid, creative social force which binds different groupings and different aspects of behaviour in different ways.”

**Holliday et al. (2010)**

**Used by Chia Suan Chong during the 11th ELT Malta Conference: Enriching Teachers' Professional Lives**

***What it means to teach culture in the language classroom***

# POLICIES, PROCEDURES AND FORMS

## FREE CONTINUING PROFESSIONAL DEVELOPMENT (CPD) SESSIONS ORGANIZED BY THE ELT COUNCIL IN 2022

	Session Title	Duration	Date	Attendees	Trainer
1.	<b>Growth Mindsets for English Language Teachers</b>	4 hours	25 & 27th January 2022	24	Angelica Pecak
2.	<b>Prospecting for New Agents</b>	2 hours	5th March 2022	17	Nicola Lutz
3.	<b>Sales for the Non-Salesy</b>	2 hours	7th March 2022	17	Nicola Lutz
4.	<b>The New MFHEA E-Learning and Blended Learning Regulations</b>	2 hours	10th March 2022	17	Martin Debattista
5.	<b>The Power of Valuing Yourself and Others; A Wellbeing Seminar</b>	4 hours	29th March 2022	50	Adrian Xuereb Archer
6.	<b>Speaking Before, During and After</b>	2 hours	19th April 2022	95	Matt Done
7.	<b>Backwards Planning</b>	2 hours	21st April 2022	95	Matt Done
8.	<b>What Have We Learnt from Emergency Remote Teaching?</b>	2 hours	28th April 2022	48	Rebecca Calleja
9.	<b>The European Union (EU) EU Transparent Working Conditions Directive and The Work-Life Balance Directive</b>	2.5 hours	28th April 2022	33	Roselyn Borg and Patrick Farrugia
10.	<b>Group Leading Training Program</b>	16 hours	2,3,4,5th May 2022	17	Various (ITS)

11.	<b>11th ELT Malta Conference</b>	12.5 hours	14, 15th October 2022	298	Various International Speakers
12.	<b>Express Publishing CPD Sessions</b>	4 hours	21st November 2022	36	Kristy Kors and Jenny Dooley

## CPD IN 2022

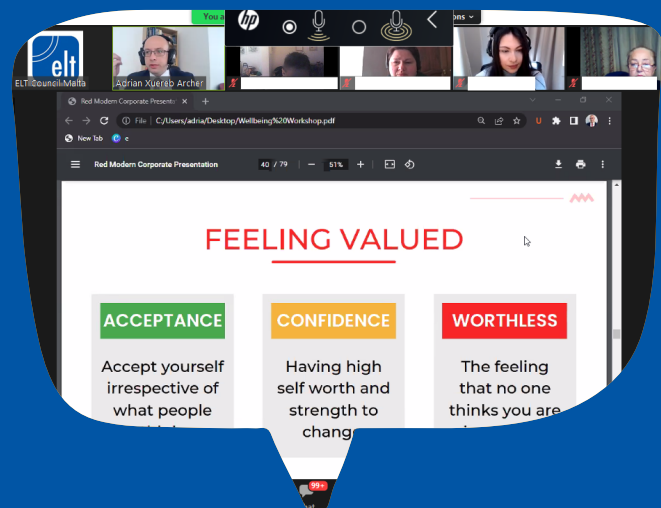
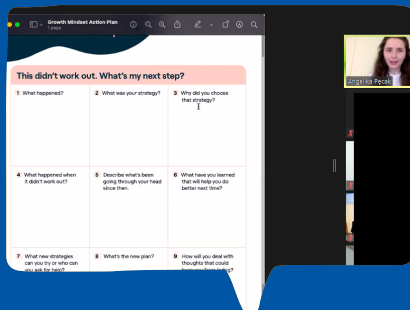
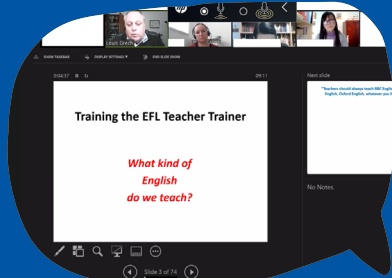
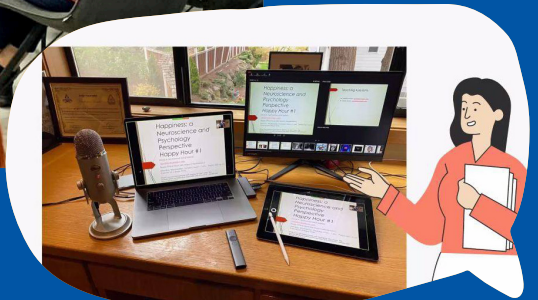
10 courses were approved for clients, i.e. private schools and freelancers.  
2 already-approved courses were re-run.

## TEACHER EDUCATION AND LEARNING TO TEACH (TELT)

There were three TELT session in 2022: March, July, October.

Grade	March	July	October
Distinction	0	0	0
Pass with Merit	5	1	2
Pass	11	11	5
Narrow Fail	9	4	4
Fail	3	3	3
Unclassified	0	0	0
Absent	2	4	1
Revision of Paper	2	0	1
<b>Total passed</b>	16	12	7
<b>Total failed</b>	12	7	7





## APPROVED TEFL AWARD COURSES IN 2022

	<b>Name of School</b>	<b>Date of Course</b>	<b>Successful Students</b>
1	<b>Easy School of Languages</b>	14.02.2022 - 25.02.2022: Face-to-Face	5 students
2	<b>English Domain</b>	05.05.2022 - 23.06.2022: Face-to-Face	4 students
3	<b>EF International Language Campuses - Malta</b>	16.02.2022 - 24.03.2022: Online	3 students
4	<b>EF International Language Campuses - Malta</b>	16.02.2022 - 24.03.2022: Face-to-Face	6 students
5	<b>EF International Language Campuses - Malta</b>	11.04.2022 - 22.04.2022: Face-to-Face	9 students
6	<b>EF International Language Campuses - Malta</b>	25.10.2022 - 24.11.2022: Face-to-Face	13 students
7	<b>European School of English (ESE)</b>	22.02.2022 - 29.03.2022: Blended learning	13 students
8	<b>European School of English (ESE)</b>	31.05.2022 - 05.07.2022: Face to-Face	8 students
9	<b>European School of English (ESE)</b>	18.10.2022 - 23.11.2022: Face-to-Face	10 students
10	<b>NSTS English Language Institute</b>	04.04.2022 - 22.04.2022: Online	14 students
11	<b>NSTS English Language Institute</b>	03.10.2022 - 21.10.2022: Online	12 students
12	<b>Online TEFL Teacher</b>	22.03.2022 - 14.04.2022: Online	6 students
13	<b>Online TEFL Teacher</b>	06.06.2022 - 30.06.2022: Online	11 students
14	<b>Online TEFL Teacher</b>	05.09.2022 - 29.09.2022: Online	6 students
15	<b>Online TEFL Teacher</b>	01.11.2022 - 01.12.2022: Online	11 students

131 students have successfully completed a TEFL Award Course in 2022.

## ELT PERMITS

To teach English as a Foreign Language in Malta as per Legal Notice 221 of 2015, one must be in possession of an ELT Permit.

Number of Permits Issued and Renewed in 2022	
New ELT Permits	105
ELT Permit Renewals	86
Temporary ELT Permits	115
Temporary ELT Permit Renewals	27
Total of Permits Issued	333
Number of Registered Teachers	896

## SPOKEN ENGLISH PROFICIENCY TEST FOR TEACHERS (SEPTT)

One of the requirements to obtain an ELT Permit is the SEPTT. The SEPTT is designed to ensure high levels of spoken English proficiency amongst ELT practitioners working in a variety of international contexts. An indication of how many applications the ELT Council received, as well as how many applicants passed and failed the test is presented below.

SEPTT Sessions 2022		Applicants	Absent	Successful	Failed
1.	<b>25 January 2022</b>	10	01	09	00
2.	<b>22 February 2022</b>	08	01	07	00
3.	<b>29 March 2022</b>	13	04	09	00
4.	<b>26 April 2022</b>	14	00	12	02
5.	<b>31 May 2022</b>	30	03	22	05
6.	<b>28 June 2022</b>	30	08	20	02
7.	<b>12 July 2022</b>	11	01	09	01
8.	<b>26 July 2022</b>	31	07	22	02
9.	<b>30 August 2022</b>	30	05	22	03
10.	<b>27 September 2022</b>	24	04	18	02
11.	<b>25 October 2022</b>	11	00	10	01
12.	<b>29 November 2022</b>	36	01	32	03
	<b>Total</b>	248	35	192	21

# ACCOMMODATION

The Registered Places of the Accommodation to be used by schools in 2022:

Residences	Apartments	Hotel Providers
26	104	52

# ELT COUNCIL MEETINGS DATES

- 27th January 2022
- 24th February 2022
- 17th March 2022
- 28th April 2022
- 30th May 2022
- 27th June 2022
- 12th September 2022
- 26th October 2022
- 15th November 2022



“When you’re busy blocking out difficult emotions and feelings, you’re not going to feel the good stuff, either.”

**Valerie Bertinelli**

**Used by Agnieszka Dudzik and Agnieszka Dzieciol-Pedich during the 11th ELT Malta Conference: Enriching Teachers’ Professional Lives**  
*Resilience as a 21st Century skill:  
A toolbox for teachers*

# INFORMATION MANAGEMENT

## MEETING WITH ELT SCHOOLS

Date	Meeting Subject
28th April 2022	<b>New EU Directives &amp; Other Legislative Updates</b>
21st June 2022	<b>Updates regarding online visa application portal</b>
26th October 2022	<b>2022 Monitoring Exercise: Review and Recommendations</b>
29th November 2022	<b>National Statistics Office (NSO)</b>

## LICENSED ELT SCHOOLS

	Licence No.	Name of School	Address
1.	<b>264</b>	A Class Academy of English	St. Catherine's High School, 11, Suffolk Road, Pembroke, PBK 1901
2.	<b>278</b>	ACE English Malta	Bay Street Complex, Level 4, St. George's Bay, St. Julian's, STJ 3311
3.	<b>161</b>	Alpha School of English	Arznell Street, St. Paul's Bay, SPB 3232
4.	<b>143</b>	am Language Studio	299, Triq Manwel Dimech, Sliema, SLM 1054
5.	<b>295/ELT55</b>	Asencia Malta Ltd	23, Vincenzo Dimech Street, Floriana
6.	<b>290/ELT50</b>	Atlas Language School	Alamein Road, Pembroke
7.	<b>207</b>	BELS Gozo	Triq ta' Doti, Kercem, KCM 1721 Gozo

8.	<b>269</b>	BELS Malta	550 West, St. Paul's Street, St. Paul's Bay
9.	<b>294/ELT54</b>	BSC Young Learners Malta Ltd	Campus Hub, The Three Arches, Valletta Road, Mosta
10.	<b>277</b>	Cavendish School of English	124, Melita Street, Valletta, VLT 1123
11.	<b>232</b>	Clubclass Language School	104, Triq is-Sidra, Swieqi, SWQ 3150
12.	<b>247</b>	EASY School of Languages	21, St. Ursula Street, Valletta, VLT 1230
13.	<b>158</b>	EC Malta	Marguerite Mangion Street, St. Julian's, STJ 3180
14.	<b>231</b>	EF International Language School - Malta	The Mayfair Business Centre, Lower St. Augustine Street, St. George's Bay, St. Julian's, STJ 3312
15.	<b>291/ELT51</b>	EEC-ITIS Malta Tourism & Languages Institute	9, EEC - ITIS Building, Triq San Pietru, San Gwann, SGN 2310
16.	<b>268</b>	English Domain	Domain Building, 102/104, Constitution Street, Mosta, MST 9055
17.	<b>125</b>	English Language Academy	151, Edgar Bernard Street, Gzira, GZR 1707
18.	<b>293/ELT53</b>	English Path Malta	West Block, Level 5/6, Marguerite Mangion Street, St. Julian's
19.	<b>209</b>	European School of English (ESE)	ESE Building, Paceville Avenue, St. Julian's, STJ 3103
20.	<b>267</b>	Executive Training Institute (ETI Malta)	ESE Building, Paceville Avenue, St. Julian's, STJ 3103
21.	<b>241</b>	Gateway School of English (GSE)	1, Bosfru Street, San Gwann (St. Julian's)
22.	<b>121</b>	GV Malta English Centre	St. George's Street, St. Paul's Bay, SPB 3476
23.	<b>127</b>	Inlingua School of Languages	92, Tigne Street, Sliema, SLM 3172
24.	<b>150</b>	Institute of English Language Studies	Mattew Pulis Street, Sliema, SLM 3052
25.	<b>242</b>	International House Malta	128, Triq is-Sirk, Swieqi, SWQ 3211

26.	<b>283</b>	LSC London School of Commerce Malta	3rd Floor, Europa Centre, St. Anne Street, Floriana, FRN 9020
27.	<b>166</b>	LINK School of English	88/90, Triq it-Tiben, Swieqi, SWQ 3034
28.	<b>270</b>	Malta University Language School	Campus Hub, Block O, Level 6 University of Malta Tal-Qroqq, Msida
29.	<b>275</b>	Maltalingua School of English	2, Birkirkara Hill, St. Julian's, STJ 1141
30.	<b>144</b>	NSTS English Language Institute	12, Taliana Lane, Gzira, GZR 1723
31.	<b>263</b>	School of English Malta	8, Magazines Street, Floriana, FRN 1119
32.	<b>288/ELT48</b>	SEAL Malta	58, Tower Tinghi Street, Xewkija, Gozo
33.	<b>162</b>	Sprachcaffe Languages PLUS	6, Alamein Road, Pembroke, PBK 1776
34.	<b>249</b>	Unilang International School of Languages	Workers' Memorial Building, South Street, Valletta

## LICENSED SCHOOL ANNEXES

“School Annexe” means any building, not contiguous to the School Premises, in whole or in part, howsoever described temporarily or permanently ordained toward ELT by the school and approved for the purpose by the Council prior to use.

	<b>Licence No</b>	<b>License Valid Until</b>	<b>School Name</b>	<b>Annexe Address</b>
1.	<b>143/01</b>	Feb-26	am Language Studio	Convent of the Sacred Heart, Sacred Heart Avenue, St Julian's
2.	<b>143/02</b>	Apr-26	am Language Studio	67, High Street, Sliema
3.	<b>231/02</b>	May-26	EF International Language Campuses - Malta	G.F. Abela Junior College, Ġużé Debono Square
4.	<b>231/04</b>	Nov-22	EF International Language Campuses - Malta	Maria Regina College, Middle School, N/S in Main Street, Naxxar
5.	<b>150/03</b>	Mar-23	(IELS) Institute of English Language Studies	IELS Pembroke, Alamein Street, Pembroke, PBK 1772



# DISTANCE LEARNING PROVIDERS (DLP)

Licence No.	Distance Learning Provider	Remarks
1. <b>DLP21.01</b>	Online TEFL Teacher	Valid until November 2024
2. <b>DLP21.02</b>	ELSA	License suspended until further notice.



*Photo from the 11th ELT Malta Conference: Enriching Teachers’ Professional Lives*

# ADMINISTRATION

## COMMUNICATION

The administration department is responsible for ensuring the smooth day to day running of the Council by answering all the queries that arise. The Council also act as the primary contact with stakeholders by organizing events such as conferences, meetings, and award ceremonies; by issuing newsletters, answering queries via telephone and emails. Compiling and drafting data for the annual report are also part of the tasks that the department undertakes.

## PREMISES

This year, the ELT Council has started working on the relocation of the ELT Council Offices. The ELT Council will be relocating to Pembroke. The premises address is ELT Council, Bice Mizzi Vassallo Complex, Alamein Road, Pembroke - Malta.

## PROCUREMENT AND TENDERS

The administration department is responsible for procurement which also includes the monitoring of supplies. This year a tender was published for the 11th ELT Malta Conference. A part of the administrative role was to ensure that Financial and Public Procurement Regulations are being adhered regarding all expenses.

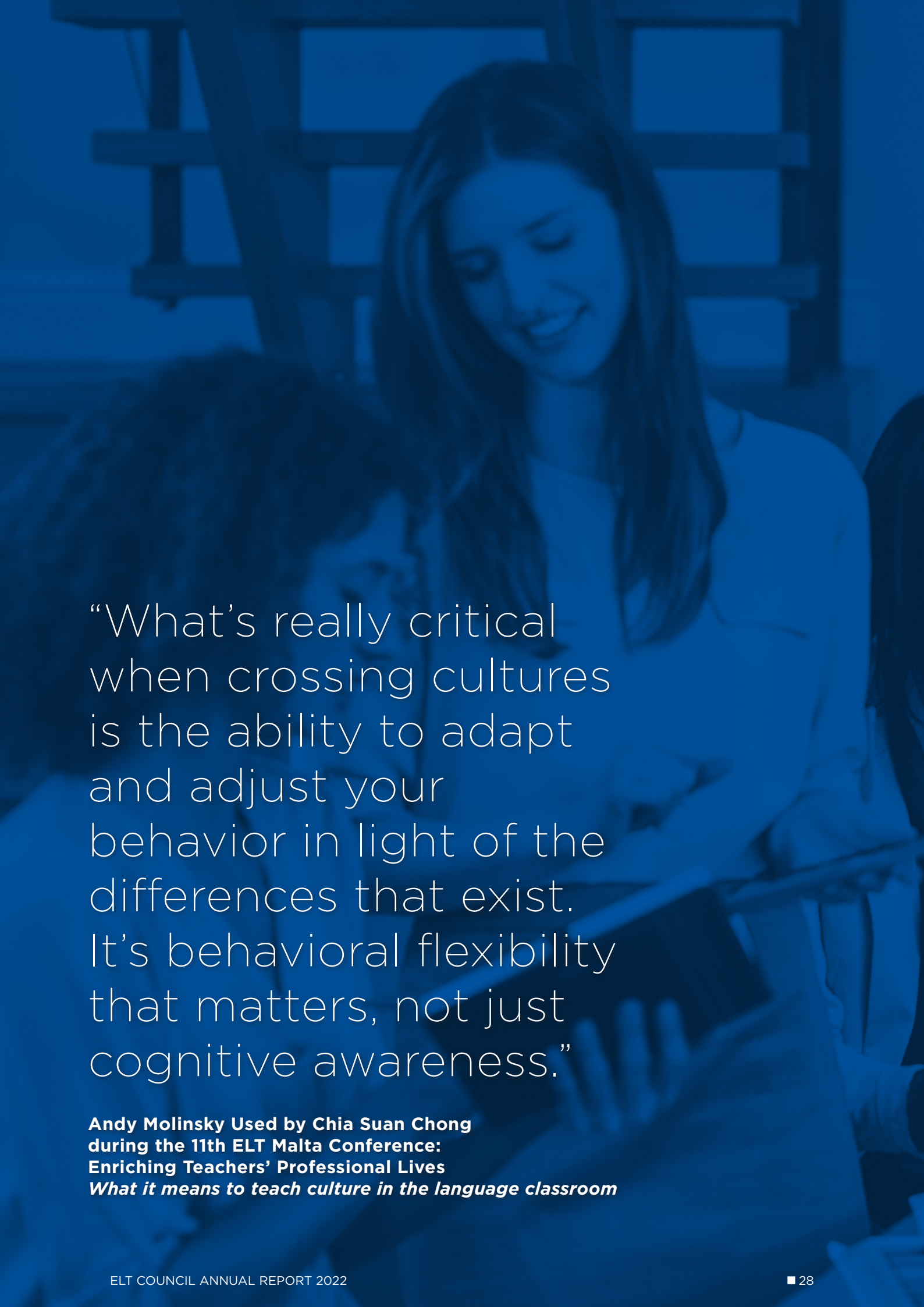
## HUMAN RESOURCES INITIATIVES

The ELT Council has issued an internal call for a Senior ELT Council Officer. The Senior ELT Council Officer has the responsibility for the development and monitoring of tasks assigned as well as to oversee ELT Council Officers in their assigned areas of responsibility as delegated by the Council and the CEO from time to time.

## STAFF TRAINING AND EVENTS

As part of the Continuous Professional Development, the ELT Council encourages its employees to attend courses, conferences, and seminars. This will help to keep abreast with the ongoing developments within the ELT sector and governmental procedures. Attending such events offers a brilliant opportunity for enhancing knowledge, skills and experience, networking and bringing helpful and valuable information back to the Council. A list of all local and international courses, seminars and conferences attended by the ELT Council throughout 2022 is presented below.

	<b>Organisation</b>	<b>Name of event</b>
1.	<b>Institute for the Public Services</b>	Evaluators Training for E-Tenders
2.	<b>Institute for the Public Services</b>	Continuous Development Award in Public Procurement
3.	<b>Institute for the Public Services</b>	Procurement by Contracting Authorities
4.	<b>Institute for the Public Services</b>	Electronic Public Procurement
5.	<b>Kunsill Studenti Universitarji (KSU)</b>	The KSU x PWC Careers EXPO
6.	<b>KSU</b>	KSU Freshers' Week 2022
7.	<b>International Consultants for Education and Fairs (ICEF)</b>	ICEF Berlin
8.	<b>FELTOM</b>	FELTOM Workshop



“What’s really critical when crossing cultures is the ability to adapt and adjust your behavior in light of the differences that exist. It’s behavioral flexibility that matters, not just cognitive awareness.”

**Andy Molinsky Used by Chia Suan Chong during the 11th ELT Malta Conference: Enriching Teachers’ Professional Lives**  
*What it means to teach culture in the language classroom*



# SECTORAL INITIATIVES

## MASTER OF ARTS IN TEACHING ENGLISH TO SPEAKERS OF OTHER LANGUAGES (MATESOL) SPONSORSHIP

The ELT Council has offered 6 scholarships to applicants who successfully enrol on the University of Malta's (UM) M.A. in Applied Linguistics & TESOL programme in 2022. Each scholarship covers the full tuition fees (€4,800) of the programme, which may be completed on a full or part-time basis.

Number of applications received	Applications not eligible	Scholarships Awarded	Withdrawn	Number of accepted applications	Total Amounts to
8	3	5	1	4	€19,200

## TEFL AWARD COURSE SPONSORSHIP

To assist with increasing the pool of available ELT teachers, the ELT Council has sponsored the TEFL Award Course for students who just obtained a pass in their English A Level in 2022. This initiative has been also extended to students that have TELT or an equivalent qualification.

Number of accepted applications	Withdrawn	Total Cost:
33	8	€6,890.00 (Total paid in 2022: €4,895.00)

## AWARDS GIVING CEREMONIES

Each year, the ELT Council staff collects nominations for the ELT Professional Awards, which are then thoroughly vetted by a specific working group. The winner is not only chosen based on the number of nominations received, but also on his or her actual merits.



*The winner of the 9th Inspiring ELT Professional Award, Mr Paul Atkins, was described as a flexible educator who is enthusiastic about his job and willing to engage in self-reflection as well as share good ideas. He is a resourceful and creative teacher, highly motivated, and inquisitive about learning, teaching and the English language. The nominee has been described as flexible, enthusiastic about the profession, willing.*

## TEACHERS' CARDS

During 2022, the ELT Council issued 233 Teachers' Cards to the teachers whose ELT Permit had been renewed/or applied for the New ELT Permit. This card entitles them to various discounts. Link to entitled discounts: <https://eltcouncil.gov.mt/elt-teachers-card>.

## CENTRAL VISA UNIT (CVU)

The office services at the central focal point for the ELT Industry with CVU to facilitate to processing of visas and renewals of Third Country Nationals (TCN) arriving to Malta for an ELT course.

## PROTECTION OF MINORS APPLICATIONS (POMA)

241 Permits and Renewals were filed for Rikors purposes with the Attorney General's office. During 2022 average of 58% accepted and eventually received their credential via blockcerts. Blockcerts were issued for ELT permits, Renewals, TELT and SEPTT certificates via the blockchain app.

## OTHER

Liaison with all necessary entities, stakeholders vis-à-vis sectoral issues.

# FINANCIAL STATEMENT

## Statement of Comprehensive Income ELT Council

For: January 2022 To: December 2022

Income Statement

Page 1 of 1

<u>Account</u>	<u>Actual</u>	<u>Budget</u>	<u>Variance</u>	<u>Var %</u>	<u>PY Actual</u>
<b>Revenue</b>					
4000 (EFL/ELT Permit)	4,525.00		4,525.00	0.00	0.00
4001 (Conference Sponsors)	7,519.70		7,519.70	0.00	0.00
4002 (Government grant )	299,364.07		299,364.07	0.00	0.00
<b>Total Revenue</b>	<b>311,408.77</b>	<b>0.00</b>	<b>311,408.77</b>	<b>0.00</b>	<b>0.00</b>
<b>Gross Profit</b>	<b><u>311,408.77</u></b>	<b><u>0.00</u></b>	<b><u>311,408.77</u></b>	<b><u>0.00</u></b>	<b><u>0.00</u></b>
<b>Other Expense</b>					
6201 (Advertising)	14,018.05		(14,018.05)	0.00	0.00
6203 (P.R. (Literature & Brochures))	2,824.09		(2,824.09)	0.00	0.00
6900 (Office Expenses)	4,002.85		(4,002.85)	0.00	0.00
7000 (Gross Wages)	167,135.48		(167,135.48)	0.00	0.00
7006 (Employers N.I.)	12,992.20		(12,992.20)	0.00	0.00
7007 (Maternity Fund)	396.63		(396.63)	0.00	0.00
7202 (Scanning)	3,758.10		(3,758.10)	0.00	0.00
7303 (Website expenses)	236.00		(236.00)	0.00	0.00
7400 (Travelling)	5,975.90		(5,975.90)	0.00	0.00
7402 (Hotels)	29,327.50		(29,327.50)	0.00	0.00
7403 (Entertainment)	1,586.25		(1,586.25)	0.00	0.00
7406 (Translation Services)	97.11		(97.11)	0.00	0.00
7601 (Audit Fees)	1,000.00		(1,000.00)	0.00	0.00
7603 (Professional Fees)	52,694.20		(52,694.20)	0.00	0.00
7605 (Accountancy Fees)	1,863.16		(1,863.16)	0.00	0.00
7700 (Conference Fees)	188.80		(188.80)	0.00	0.00
7901 (Bank Charges)	190.48		(190.48)	0.00	0.00
8004 (Computer Hardware Depreciation)	434.65		(434.65)	0.00	0.00
8201 (Subscriptions)	6,000.00		(6,000.00)	0.00	0.00
8203 (Training Costs)	5,203.86		(5,203.86)	0.00	0.00
<b>Total Other Expense</b>	<b>309,925.31</b>	<b>0.00</b>	<b>(309,925.31)</b>	<b>0.00</b>	<b>0.00</b>
<b>Profit Before Tax</b>	<b><u>1,483.46</u></b>	<b><u>0.00</u></b>	<b><u>1,483.46</u></b>	<b><u>0.00</u></b>	<b><u>0.00</u></b>



**GOVERNMENT OF MALTA**  
MINISTRY FOR EDUCATION,  
SPORT, YOUTH, RESEARCH  
AND INNOVATION

**ELT Council**  
Bice Mizzi Vassallo Complex, Alamein Road, Pembroke

**Tel:** (+356) 2598 1240/1/2/3/4  
**Email:** [info.eltcouncil@gov.mt](mailto:info.eltcouncil@gov.mt)  
**Website:** [www.eltcouncil.gov.mt](http://www.eltcouncil.gov.mt)